

STRIDE – Small Town Iowa Development and Enhancement

A PRESENTATION FOR THE MPO/RPA QUARTERLY MEETING – SEPT 21ST
BY REGIONAL PLANNING AFFILIATION 15

What is STRIDE?

- ▶ Acronym stands for Small Town Rural Iowa Development and Enhancement.
- ▶ Program developed by Regional Planning Affiliation 15 to provide transportation planning assistance to small cities within the region.
- ▶ Process also helps the RPA understand small city transportation needs.
- ▶ Provides assistance to the city to develop a local transportation plan.
- ▶ Goal is to identify projects that the RPA could assist the city in obtaining funding for.

The STRIDE Plan

- ▶ Plan will help small cities:
 - ▶ Review current infrastructure.
 - ▶ Identify and prioritize transportation needs.
 - ▶ Develop a vision to guide future transportation projects.
 - ▶ Determine projects to address identified needs and make improvements.
 - ▶ Analyze available funding versus anticipated costs.
 - ▶ Identify potential funding sources for implementing transportation projects.
- ▶ Assistance includes staff time to participate in meetings with city representatives, collect data, prepare a plan, and also a copy of the completed plan.

How does a city receive assistance?

- ▶ Any city within Regional Planning Affiliation 15 with a population under 5,000 is eligible for assistance.
- ▶ Interested cities must submit a request for assistance to the RPA to be considered.
- ▶ For the first round of the program, the RPA received applications from seven cities.
- ▶ RPA staff review the requests and select the best applicant.
- ▶ Sigourney was selected as the first city for the RPA to develop a STRIDE plan with.

Request for Assistance form

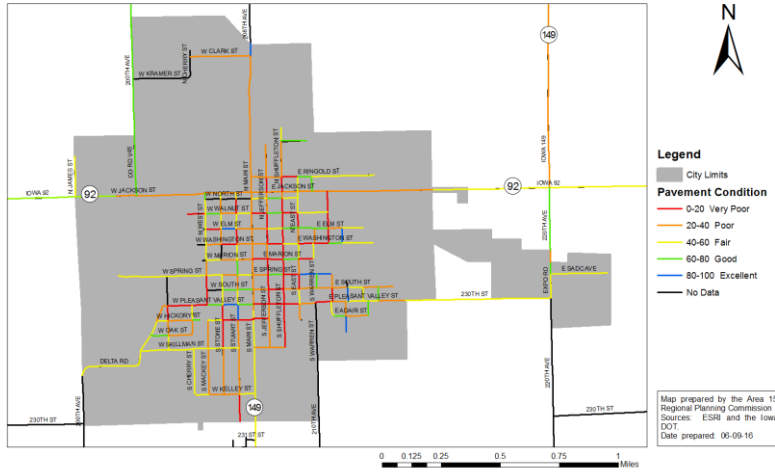
<p>STRIDE – Small Town Rural Iowa Development and Enhancement</p> <p>A request for projects for transportation planning assistance for small cities.</p> <p>City name: _____</p> <p>Mailing address: _____</p> <p>Mayor: _____ Primary Contact Person: _____</p> <p>Primary Contact's Phone: _____ E-mail: _____</p> <p>In what areas are you interested in assistance (you may mark multiple lines):</p> <p>_____ Identifying funding to repair or improve roads.</p> <p>_____ Determining projects and identifying funding to make safety improvements including signage, pavement markings, stop signs or red or yellow beacons, or lighting.</p> <p>_____ Developing a bike and pedestrian system including sidewalks, trails, and/or bike lanes for transportation, recreation, and access to schools.</p> <p>_____ Identifying sidewalks in need of repair and/or gaps in the sidewalk system that should be filled.</p> <p>_____ Improving public transit services to help resident's access services and stores in or out of town.</p> <p>Please describe how the city will use the transportation planning assistance and the resulting document.</p> <p>_____</p> <p>_____</p> <p>_____</p> <p>_____</p> <p>_____</p> <p>_____</p> <p>Applications must be submitted (postmarked) by February 1st, 2015.</p>	<p>Has the city made any transportation improvements in the past five years? (If yes, please describe)</p> <p>_____</p> <p>_____</p> <p>_____</p> <p>Has the city applied for any grants for transportation projects in the past five years? (If yes, please identify the grant and the project it was for)</p> <p>_____</p> <p>_____</p> <p>_____</p> <p>Please identify, by name and position, anyone from the city who will help with the transportation planning?</p> <p>_____</p> <p>_____</p> <p>_____</p> <p>To show that the city agrees to participate in the planning process and that city representatives will provide information and participate in discussions, the mayor should print their name, sign, and date on the line below.</p> <p>_____ Name/Signature Date</p> <p>Applications should be submitted to: City Clerk, Transportation Director Area 02 Regional Planning Commission 600 Iowa 120 Des Moines, IA 50319</p> <p>Applications must be submitted (postmarked) by February 1st, 2015.</p>
--	--

Sigourney's STRIDE Plan

- ▶ RPA staff worked with the city's street and sanitation committee.
- ▶ Participated in four meetings with the city to: develop an outline, gather information, identify needs and review the draft plan.
- ▶ Discusses city's transportation system, including: current roads and sidewalks, areas of safety concern, significant deterioration and maintenance schedule.
- ▶ Establishes priorities for future investment.
- ▶ Reviews city's budget for transportation improvements.
- ▶ Identifies future projects and funding sources.
- ▶ Discusses future challenges.

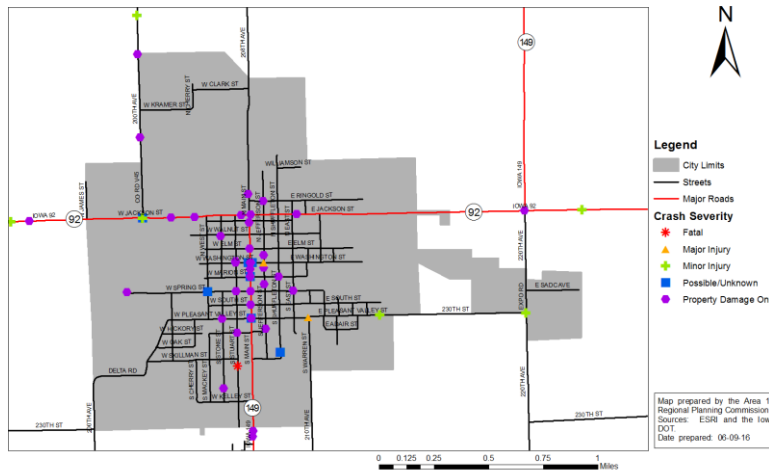
Visualization

Figure 3-7: 2013 Pavement Condition of Sigourney's Roads



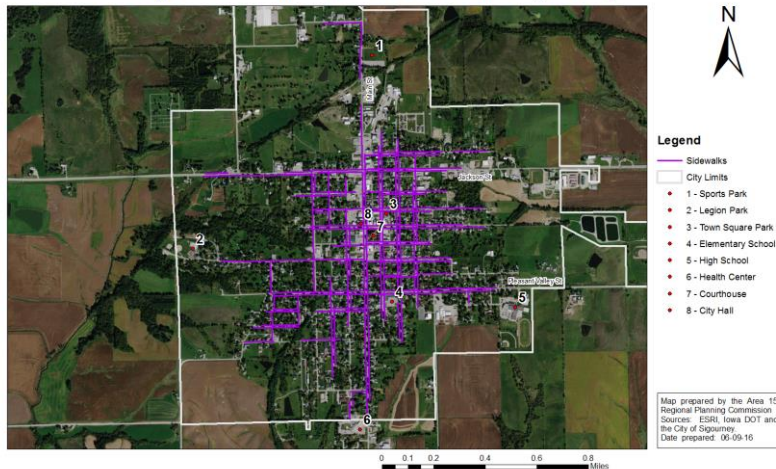
Visualization

Figure 3-8: Crash Location and Severity (2010-2014)



Visualization

Figure 4-1: Sidewalk Locations in Sigourney



Potential Future Projects

- ▶ Connecting the high school, library, sports park and Sigourney Care Center to the sidewalk system.
- ▶ Adding pedestrian crossings on east and west Jackson Street (Hwy 92) and on north Main Street by the sports park.
- ▶ Widening the intersection of Main Street (Hwy 149) and Pleasant Valley and the intersection of Pleasant Valley Street and Warren to improve the turning movements of trucks.
- ▶ Replace control panel and wiring for traffic signals.
- ▶ Sign replacement.

Next Steps

- ▶ Identify possible funding sources for future projects.
- ▶ Make final revisions to Sigourney's STRIDE plan and present to the city.
- ▶ Review the STRIDE process for improvements.
- ▶ Accept applications for the second round of assistance in Early 2017.