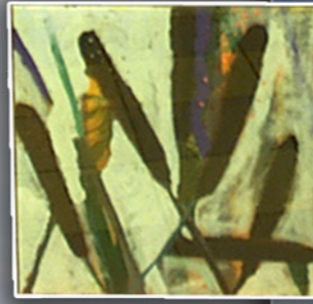




# TOWN & COUNTRY Mitchellville



Polk County  
I-80 westbound at milepost 148  
Artist: Concetta Morales  
Completed: January 2003

Featuring the transition from rural to urban areas, this facility showcases the best of both. The outer portions of the property appear rural in nature. As visitors move toward the building, urban landscape characteristics begin to emerge. The rest area building is at the center of an area built to resemble a downtown plaza, complete with a clock tower.

Travelers can view art features representing the mosaic qualities of the Iowa landscape, with farm fields and roadways embedded in grid patterns.

The playground equipment at the site is as much an art piece as it is a functional play area for visiting children. The equipment is positioned behind the building in the visitor's sightline as they walk through the front door. Walking trails leading in each direction to tall prairie grasses provide another urban-to-rural transition experience.

